

Acta Crystallographica Section E

## Structure Reports

Online

ISSN 1600-5368

# Bis{1-[(1*H*-benzotriazol-1-yl)methyl]-2-methyl-1*H*-imidazole- $\kappa$ N<sup>3</sup>}dichlorido-zinc

Haiyan Yang\* and Yinghua Li

School of Materials and Chemical Engineering, Zhongyuan University of Technology, Zhengzhou 450007, People's Republic of China

Correspondence e-mail: yanghy2009@yahoo.com.cn

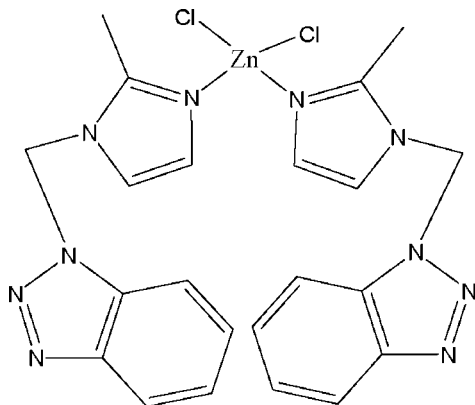
Received 16 February 2012; accepted 16 May 2012

 Key indicators: single-crystal X-ray study;  $T = 295$  K; mean  $\sigma(\text{C}-\text{C}) = 0.004$  Å;  $R$  factor = 0.033;  $wR$  factor = 0.079; data-to-parameter ratio = 13.5.

In the mononuclear title compound,  $[\text{ZnCl}_2(\text{C}_{11}\text{H}_{11}\text{N}_5)_2]$ , the  $\text{Zn}^{\text{II}}$  atom is coordinated by two Cl atoms and two imidazole N atoms in a distorted tetrahedral geometry. Adjacent complex molecules are stacked through aromatic  $\pi$ - $\pi$  interactions; the closest distance between adjacent aromatic rings is 3.598 (2) Å.

## Related literature

For an introduction to metal-organic networks, see: Chen *et al.* (2001). For general background to complexes constructed from *N*-heterocyclic ligands, see: Yang *et al.* (2009); Meng *et al.* (2009); Zhao *et al.* (2012*a,b*). For  $\pi$ - $\pi$  interactions, see: Janiak *et al.* (2000).



## Experimental

## Crystal data

$[\text{ZnCl}_2(\text{C}_{11}\text{H}_{11}\text{N}_5)_2]$   
 $M_r = 562.79$   
 Triclinic,  $P\bar{1}$   
 $a = 8.1625$  (16) Å  
 $b = 12.692$  (3) Å  
 $c = 13.290$  (3) Å  
 $\alpha = 65.52$  (3)°  
 $\beta = 79.47$  (3)°

$\gamma = 84.02$  (3)°  
 $V = 1231.3$  (6) Å<sup>3</sup>  
 $Z = 2$   
 Mo  $K\alpha$  radiation  
 $\mu = 1.25$  mm<sup>-1</sup>  
 $T = 295$  K  
 $0.21 \times 0.20 \times 0.18$  mm

## Data collection

Rigaku Saturn CCD diffractometer  
 Absorption correction: numerical  
 (*REQAB*; Jacobson, 1998)  
 $T_{\text{min}} = 0.780$ ,  $T_{\text{max}} = 0.807$

9045 measured reflections  
 4291 independent reflections  
 3870 reflections with  $I > 2\sigma(I)$   
 $R_{\text{int}} = 0.020$

## Refinement

$R[F^2 > 2\sigma(F^2)] = 0.033$   
 $wR(F^2) = 0.079$   
 $S = 1.02$   
 4291 reflections

318 parameters  
 H-atom parameters constrained  
 $\Delta\rho_{\text{max}} = 0.25$  e Å<sup>-3</sup>  
 $\Delta\rho_{\text{min}} = -0.21$  e Å<sup>-3</sup>

Data collection: *CrystalClear* (Rigaku/MS, 2006); cell refinement: *CrystalClear*; data reduction: *CrystalClear*; program(s) used to solve structure: *SHELXS97* (Sheldrick, 2008); program(s) used to refine structure: *SHELXL97* (Sheldrick, 2008); molecular graphics: *SHELXTL* (Sheldrick, 2008); software used to prepare material for publication: *SHELXTL*.

The authors are grateful to Zhongyuan University of Technology for financial support and thank Professor Hong-Wei Hou of Zhengzhou University for his help.

Supplementary data and figures for this paper are available from the IUCr electronic archives (Reference: RK2337).

## References

- Chen, B., Eddaoudi, M., Hyde, S. T., O'Keeffe, M. & Yaghi, O. M. (2001). *Science*, **291**, 1021–1023.  
 Jacobson, R. (1998). *REQAB*. Molecular Structure Corporation, The Woodlands, Texas, USA.  
 Janiak, C. (2000). *J. Chem. Soc. Dalton Trans.* pp. 3885–3896.  
 Meng, X.-R., Zhu, X.-Q., Qi, Y.-F., Hou, H.-W. & Fan, Y.-T. (2009). *J. Mol. Struct.* **934**, 28–36.  
 Rigaku/MS (2006). *CrystalClear*. Rigaku/MS, The Woodlands, Texas, USA, and Rigaku Corporation, Tokyo, Japan.  
 Sheldrick, G. M. (2008). *Acta Cryst.* **A64**, 112–122.  
 Yang, H.-Y., Li, L.-K., Wu, J., Hou, H.-W., Xiao, B. & Fan, Y.-T. (2009). *Chem. Eur. J.* **15**, 4049–4056.  
 Zhao, L., Liu, B., Jin, G. & Meng, X. (2012*a*). *Acta Cryst.* **E68**, m139–m140.  
 Zhao, L., Liu, B., Li, T. & Meng, X. (2012*b*). *Acta Cryst.* **E68**, m162.

## supplementary materials

*Acta Cryst.* (2012). E68, m819 [doi:10.1107/S1600536812022313]

**Bis{1-[(1*H*-benzotriazol-1-yl)methyl]-2-methyl-1*H*-imidazole- $\kappa$ N<sup>3</sup>}dichloridozinc****Haiyan Yang and Yinghua Li****Comment**

In recent years, metal-organic networks have been widely developed because of the charming structure topologies and applications in various areas (Chen *et al.*, 2001). The flexible multidentate *N*-heterocyclic ligands are good candidates for constructing metal-organic networks due to their diverse coordination modes (Yang *et al.*, 2009; Meng *et al.*, 2009; Zhao *et al.*, 2012a; Zhao *et al.*, 2012b). In this work, we selected a new *N*-heterocyclic compound 1-[(benzotriazol-1-yl)methyl]-1-*H*-1,3-(2-methyl-imidazol) as ligand, generating a new coordination compound, Zn(C<sub>11</sub>H<sub>11</sub>N<sub>5</sub>)<sub>2</sub>Cl<sub>2</sub>, (**I**), which is reported here. In the **I**, the Zn atom is four-coordinated by two N atoms from two ligands and two Cl atoms in a distorted tetrahedral geometry with the dihedral angle of 84.1 (2)° between the N6/Zn1/N10 and Cl1/Zn1/Cl2 planes (Fig. 1). In the crystal structure, the two adjacent mononuclear structure units are stacked through the aromatic  $\pi$ - $\pi$ -stacking interactions (the closest distance between adjacent aromatic rings is 3.598 (2)Å), forming a quasi-dinuclear structure (Fig. 2), and these quasi-dinuclear structure units are further linked by intermolecular interactions to form a three-dimensional supramolecular network (Fig. 3).

**Experimental**

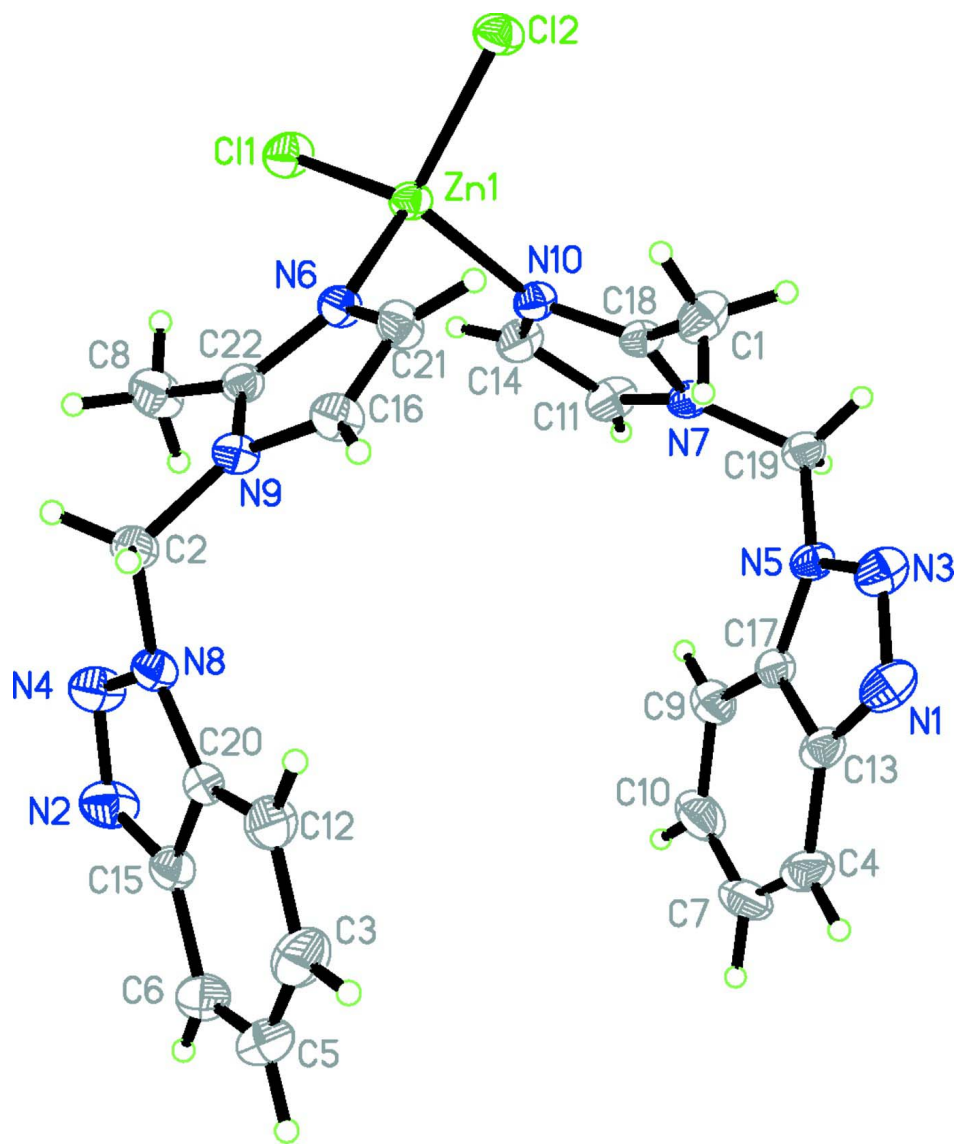
A methanol solution (5 ml) of 1-[(benzotriazol-1-yl)methyl]-1-*H*-1,3-(2-methyl-imidazol) (21.3 mg, 0.1 mmol) was added dropwise into a methanol–aqueous solution (3 ml) of ZnCl<sub>2</sub> (0.05 mmol, 6.8 mg). The precipitate was filtered and the resulting solution was left at room temperature. After three days, good quality colourless crystals were obtained from the filtrate and dried in air.

**Refinement**

H atoms were generated geometrically, with C—H = 0.96, 0.97 and 0.93Å for methyl, methylene and aromatic H, respectively, and constrained to ride their parent atoms with  $U_{\text{iso}}(\text{H}) = 1.5U_{\text{eq}}(\text{C})$  for methyl H and  $U_{\text{iso}}(\text{H}) = 1.2U_{\text{eq}}(\text{C})$  for other H atoms.

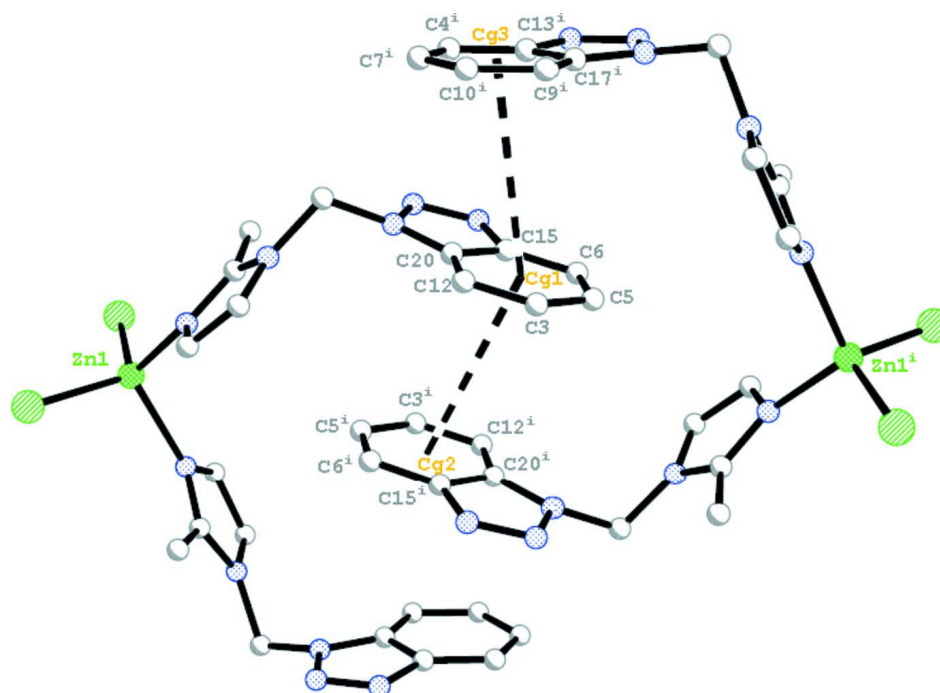
**Computing details**

Data collection: *CrystalClear* (Rigaku/MSC, 2006); cell refinement: *CrystalClear* (Rigaku/MSC, 2006); data reduction: *CrystalClear* (Rigaku/MSC, 2006); program(s) used to solve structure: *SHELXS97* (Sheldrick, 2008); program(s) used to refine structure: *SHELXL97* (Sheldrick, 2008); molecular graphics: *SHELXTL* (Sheldrick, 2008); software used to prepare material for publication: *SHELXTL* (Sheldrick, 2008).

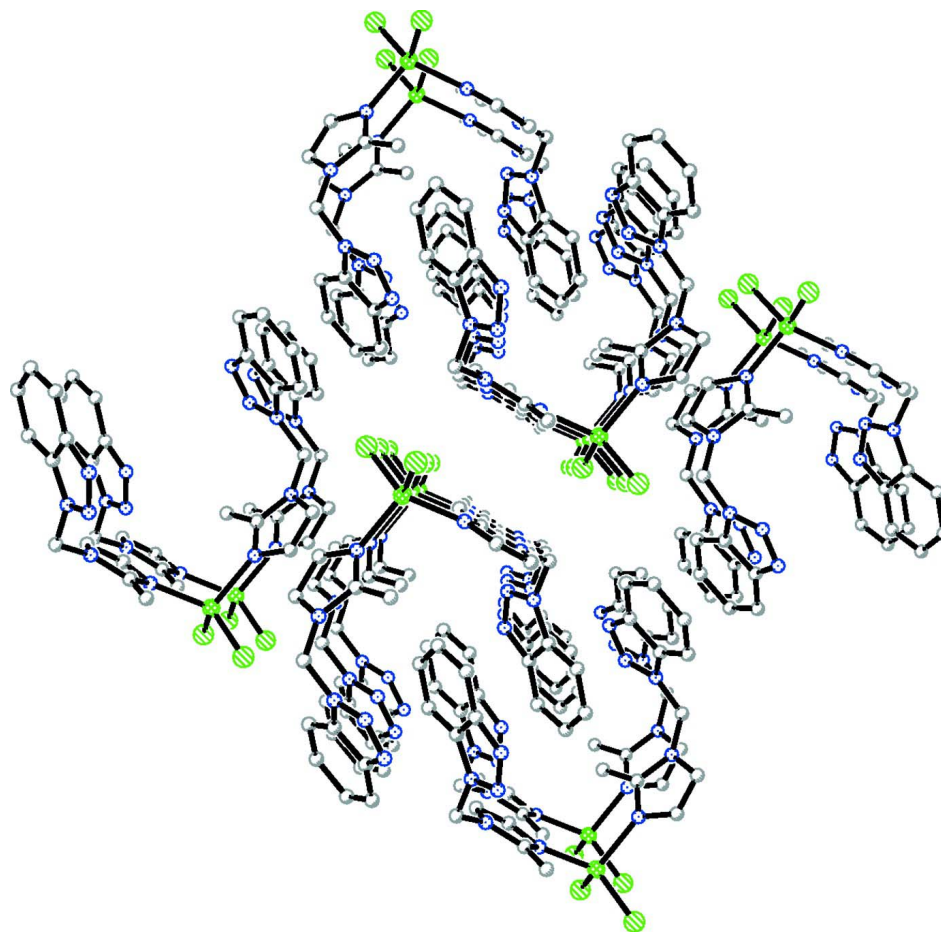


**Figure 1**

View of the title molecule, showing the atom labeling scheme. Displacement ellipsoids are drawn at the 30% probability level. H atoms are presented as a small spheres of arbitrary radius.

**Figure 2**

The  $\pi$ - $\pi$ -stacking interactions between the two adjacent mononuclear structure units. Symmetry code: (i) -x, -y, -z.

**Figure 3**

View of the crystal packing along the *a* axis.

**Bis{1-[(1*H*-benzotriazol-1-yl)methyl]-2-methyl-1*H*-imidazole- $\kappa$ N<sup>3</sup>}dichloridozinc**

*Crystal data*

[ZnCl<sub>2</sub>(C<sub>11</sub>H<sub>11</sub>N<sub>5</sub>)<sub>2</sub>]

*M<sub>r</sub>* = 562.79

Triclinic, *P* $\bar{1}$

Hall symbol: -P 1

*a* = 8.1625 (16) Å

*b* = 12.692 (3) Å

*c* = 13.290 (3) Å

$\alpha$  = 65.52 (3)°

$\beta$  = 79.47 (3)°

$\gamma$  = 84.02 (3)°

*V* = 1231.3 (6) Å<sup>3</sup>

*Z* = 2

*F*(000) = 576

*D<sub>x</sub>* = 1.518 Mg m<sup>-3</sup>

Mo *K*α radiation,  $\lambda$  = 0.71073 Å

Cell parameters from 3518 reflections

$\theta$  = 2.5–26.0°

$\mu$  = 1.25 mm<sup>-1</sup>

*T* = 295 K

Block, colourless

0.21 × 0.20 × 0.18 mm

*Data collection*

Rigaku Saturn CCD

diffractometer

Radiation source: fine-focus sealed tube

Graphite monochromator

Detector resolution: 28.5714 pixels mm<sup>-1</sup>

$\omega$  scans

Absorption correction: numerical

(*REQAB*; Jacobson, 1998)

*T<sub>min</sub>* = 0.780, *T<sub>max</sub>* = 0.807

9045 measured reflections

4291 independent reflections  
 3870 reflections with  $I > 2\sigma(I)$   
 $R_{\text{int}} = 0.020$   
 $\theta_{\text{max}} = 25.0^\circ$ ,  $\theta_{\text{min}} = 2.5^\circ$

$h = -9 \rightarrow 9$   
 $k = -15 \rightarrow 15$   
 $l = -15 \rightarrow 15$

*Refinement*

Refinement on  $F^2$   
 Least-squares matrix: full  
 $R[F^2 > 2\sigma(F^2)] = 0.033$   
 $wR(F^2) = 0.079$   
 $S = 1.02$   
 4291 reflections  
 318 parameters  
 0 restraints  
 Primary atom site location: structure-invariant  
 direct methods  
 Secondary atom site location: difference Fourier  
 map

Hydrogen site location: inferred from  
 neighbouring sites  
 H-atom parameters constrained  
 $w = 1/[\sigma^2(F_o^2) + (0.0395P)^2 + 0.550P]$   
 where  $P = (F_o^2 + 2F_c^2)/3$   
 $(\Delta/\sigma)_{\text{max}} = 0.001$   
 $\Delta\rho_{\text{max}} = 0.25 \text{ e } \text{Å}^{-3}$   
 $\Delta\rho_{\text{min}} = -0.21 \text{ e } \text{Å}^{-3}$   
 Extinction correction: *SHELXL97* (Sheldrick,  
 2008)  
 Extinction coefficient: 0.0016 (4)

*Special details*

**Geometry.** All s.u.'s (except the s.u. in the dihedral angle between two l.s. planes) are estimated using the full covariance matrix. The cell s.u.'s are taken into account individually in the estimation of s.u.'s in distances, angles and torsion angles; correlations between s.u.'s in cell parameters are only used when they are defined by crystal symmetry. An approximate (isotropic) treatment of cell s.u.'s is used for estimating s.u.'s involving l.s. planes.

**Refinement.** Refinement of  $F^2$  against ALL reflections. The weighted  $R$ -factor  $wR$  and goodness of fit  $S$  are based on  $F^2$ , conventional  $R$ -factors  $R$  are based on  $F$ , with  $F$  set to zero for negative  $F^2$ . The threshold expression of  $F^2 > \sigma(F^2)$  is used only for calculating  $R$ -factors(gt) *etc.* and is not relevant to the choice of reflections for refinement.  $R$ -factors based on  $F^2$  are statistically about twice as large as those based on  $F$ , and  $R$ -factors based on ALL data will be even larger.

*Fractional atomic coordinates and isotropic or equivalent isotropic displacement parameters ( $\text{Å}^2$ )*

	$x$	$y$	$z$	$U_{\text{iso}}^*/U_{\text{eq}}$
Zn1	0.26096 (3)	0.74531 (2)	0.46846 (2)	0.03355 (10)
C1	-0.0640 (4)	0.7685 (2)	0.6732 (2)	0.0512 (7)
H1A	-0.0589	0.7233	0.6299	0.077*
H1B	-0.1713	0.8072	0.6750	0.077*
H1C	-0.0469	0.7186	0.7481	0.077*
C2	0.6003 (3)	0.3826 (2)	0.7613 (2)	0.0409 (6)
H2A	0.5611	0.3045	0.8044	0.049*
H2B	0.6908	0.3796	0.7039	0.049*
C3	0.5257 (4)	0.2904 (3)	1.1385 (2)	0.0641 (8)
H3	0.4495	0.2423	1.1963	0.077*
C4	0.1027 (4)	0.8220 (3)	1.1020 (2)	0.0606 (9)
H4	0.0662	0.7702	1.1748	0.073*
C5	0.6498 (4)	0.3382 (3)	1.1651 (2)	0.0613 (8)
H5	0.6543	0.3204	1.2399	0.074*
C6	0.7635 (4)	0.4097 (3)	1.0851 (2)	0.0531 (7)
H6	0.8446	0.4423	1.1032	0.064*
C7	0.2358 (5)	0.8891 (3)	1.0776 (3)	0.0692 (10)
H7	0.2905	0.8839	1.1351	0.083*
C8	0.6422 (3)	0.6102 (3)	0.5543 (2)	0.0539 (7)
H8A	0.6301	0.6618	0.4789	0.081*

H8B	0.7257	0.5513	0.5533	0.081*
H8C	0.6753	0.6530	0.5919	0.081*
C9	0.2172 (3)	0.9801 (2)	0.8796 (2)	0.0505 (7)
H9	0.2551	1.0317	0.8070	0.061*
C10	0.2928 (4)	0.9661 (3)	0.9675 (3)	0.0662 (9)
H10	0.3859	1.0092	0.9543	0.079*
C11	0.2104 (3)	1.0085 (2)	0.5854 (2)	0.0475 (6)
H11	0.2452	1.0755	0.5865	0.057*
C12	0.5123 (3)	0.3121 (2)	1.0295 (2)	0.0499 (7)
H12	0.4294	0.2806	1.0118	0.060*
C13	0.0228 (3)	0.8343 (2)	1.0126 (2)	0.0423 (6)
C14	0.2853 (3)	0.9530 (2)	0.5215 (2)	0.0449 (6)
H14	0.3822	0.9758	0.4698	0.054*
C15	0.7536 (3)	0.4324 (2)	0.9738 (2)	0.0399 (6)
C16	0.2988 (3)	0.4307 (2)	0.7382 (2)	0.0424 (6)
H16	0.2515	0.3673	0.7993	0.051*
C17	0.0800 (3)	0.9127 (2)	0.90483 (19)	0.0361 (5)
C18	0.0675 (3)	0.85568 (19)	0.62160 (18)	0.0337 (5)
C19	-0.0489 (3)	0.9778 (2)	0.72795 (19)	0.0390 (6)
H19A	-0.0363	1.0582	0.7134	0.047*
H19B	-0.1604	0.9702	0.7164	0.047*
C20	0.6307 (3)	0.38376 (19)	0.94853 (19)	0.0336 (5)
C21	0.2188 (3)	0.5156 (2)	0.6632 (2)	0.0413 (6)
H21	0.1043	0.5207	0.6632	0.050*
C22	0.4817 (3)	0.5555 (2)	0.61400 (18)	0.0337 (5)
Cl1	0.45953 (8)	0.83942 (6)	0.32652 (5)	0.04840 (17)
Cl2	0.03843 (8)	0.70774 (5)	0.41322 (5)	0.04285 (16)
N1	-0.1179 (3)	0.78472 (19)	1.01042 (18)	0.0547 (6)
N2	0.8546 (3)	0.4955 (2)	0.87684 (19)	0.0533 (6)
N3	-0.1494 (3)	0.82872 (19)	0.90881 (18)	0.0495 (6)
N4	0.8026 (3)	0.48747 (19)	0.79389 (18)	0.0489 (6)
N5	-0.0311 (2)	0.90653 (16)	0.84270 (15)	0.0354 (4)
N6	0.3321 (2)	0.59458 (16)	0.58550 (15)	0.0348 (4)
N7	0.0725 (2)	0.94689 (16)	0.64867 (15)	0.0350 (4)
N8	0.6644 (2)	0.42128 (16)	0.83454 (16)	0.0364 (4)
N9	0.4650 (2)	0.45578 (16)	0.70724 (15)	0.0347 (4)
N10	0.1957 (2)	0.85662 (16)	0.54477 (15)	0.0355 (4)

Atomic displacement parameters ( $\text{\AA}^2$ )

	$U^{11}$	$U^{22}$	$U^{33}$	$U^{12}$	$U^{13}$	$U^{23}$
Zn1	0.03514 (17)	0.03640 (16)	0.02612 (15)	-0.00623 (11)	-0.00370 (11)	-0.00895 (11)
C1	0.0563 (18)	0.0530 (16)	0.0458 (15)	-0.0214 (13)	0.0089 (13)	-0.0238 (13)
C2	0.0439 (15)	0.0411 (13)	0.0426 (14)	0.0049 (11)	-0.0164 (12)	-0.0192 (11)
C3	0.059 (2)	0.077 (2)	0.0445 (17)	-0.0119 (16)	0.0098 (15)	-0.0178 (16)
C4	0.085 (2)	0.0578 (18)	0.0370 (15)	0.0294 (17)	-0.0215 (16)	-0.0194 (14)
C5	0.065 (2)	0.083 (2)	0.0399 (16)	0.0015 (17)	-0.0088 (15)	-0.0293 (16)
C6	0.0531 (18)	0.0654 (18)	0.0510 (16)	-0.0007 (14)	-0.0160 (14)	-0.0306 (15)
C7	0.078 (2)	0.082 (2)	0.075 (2)	0.043 (2)	-0.050 (2)	-0.053 (2)
C8	0.0376 (15)	0.0638 (18)	0.0451 (15)	-0.0141 (13)	-0.0039 (12)	-0.0053 (13)

C9	0.0418 (15)	0.0581 (17)	0.0529 (16)	-0.0030 (13)	-0.0104 (13)	-0.0222 (14)
C10	0.0482 (18)	0.082 (2)	0.087 (3)	0.0086 (16)	-0.0295 (18)	-0.047 (2)
C11	0.0572 (17)	0.0461 (15)	0.0410 (14)	-0.0214 (13)	0.0012 (13)	-0.0186 (12)
C12	0.0381 (15)	0.0631 (17)	0.0495 (16)	-0.0100 (13)	-0.0024 (13)	-0.0237 (14)
C13	0.0550 (17)	0.0365 (13)	0.0316 (13)	0.0073 (12)	-0.0056 (12)	-0.0125 (11)
C14	0.0412 (15)	0.0540 (16)	0.0412 (14)	-0.0205 (12)	0.0042 (12)	-0.0209 (12)
C15	0.0368 (14)	0.0440 (14)	0.0427 (14)	-0.0005 (11)	-0.0105 (11)	-0.0196 (11)
C16	0.0402 (15)	0.0434 (14)	0.0347 (13)	-0.0129 (11)	-0.0036 (11)	-0.0053 (11)
C17	0.0384 (14)	0.0367 (13)	0.0330 (12)	0.0015 (10)	-0.0064 (11)	-0.0143 (10)
C18	0.0385 (14)	0.0339 (12)	0.0277 (12)	-0.0056 (10)	-0.0062 (11)	-0.0102 (10)
C19	0.0469 (15)	0.0379 (13)	0.0315 (12)	0.0023 (11)	-0.0077 (11)	-0.0135 (10)
C20	0.0304 (12)	0.0365 (12)	0.0338 (12)	0.0024 (10)	-0.0063 (10)	-0.0144 (10)
C21	0.0297 (13)	0.0474 (14)	0.0388 (14)	-0.0090 (11)	-0.0015 (11)	-0.0094 (11)
C22	0.0332 (13)	0.0389 (13)	0.0284 (11)	-0.0043 (10)	-0.0040 (10)	-0.0127 (10)
Cl1	0.0465 (4)	0.0581 (4)	0.0330 (3)	-0.0189 (3)	0.0043 (3)	-0.0112 (3)
Cl2	0.0389 (3)	0.0525 (4)	0.0368 (3)	-0.0112 (3)	-0.0077 (3)	-0.0147 (3)
N1	0.0725 (17)	0.0467 (13)	0.0350 (12)	-0.0167 (12)	0.0062 (11)	-0.0091 (10)
N2	0.0482 (14)	0.0619 (15)	0.0474 (13)	-0.0193 (11)	-0.0101 (11)	-0.0148 (12)
N3	0.0565 (14)	0.0484 (12)	0.0400 (12)	-0.0222 (11)	0.0037 (11)	-0.0141 (10)
N4	0.0472 (13)	0.0543 (13)	0.0394 (12)	-0.0158 (11)	-0.0071 (10)	-0.0096 (10)
N5	0.0417 (12)	0.0358 (10)	0.0270 (10)	-0.0091 (9)	-0.0025 (9)	-0.0102 (8)
N6	0.0319 (11)	0.0385 (11)	0.0296 (10)	-0.0057 (8)	-0.0031 (9)	-0.0089 (8)
N7	0.0415 (12)	0.0348 (10)	0.0263 (9)	-0.0062 (9)	-0.0036 (9)	-0.0093 (8)
N8	0.0340 (11)	0.0387 (11)	0.0365 (11)	-0.0030 (9)	-0.0090 (9)	-0.0133 (9)
N9	0.0363 (11)	0.0347 (10)	0.0320 (10)	-0.0029 (8)	-0.0087 (9)	-0.0106 (8)
N10	0.0364 (11)	0.0398 (11)	0.0309 (10)	-0.0097 (8)	-0.0014 (9)	-0.0145 (9)

*Geometric parameters (Å, °)*

Zn1—N6	2.012 (2)	C10—H10	0.9300
Zn1—N10	2.035 (2)	C11—C14	1.345 (4)
Zn1—Cl2	2.2413 (8)	C11—N7	1.370 (3)
Zn1—Cl1	2.2431 (12)	C11—H11	0.9300
C1—C18	1.482 (3)	C12—C20	1.383 (4)
C1—H1A	0.9600	C12—H12	0.9300
C1—H1B	0.9600	C13—N1	1.376 (3)
C1—H1C	0.9600	C13—C17	1.390 (3)
C2—N8	1.449 (3)	C14—N10	1.385 (3)
C2—N9	1.457 (3)	C14—H14	0.9300
C2—H2A	0.9700	C15—N2	1.370 (3)
C2—H2B	0.9700	C15—C20	1.388 (3)
C3—C12	1.381 (4)	C16—C21	1.335 (3)
C3—C5	1.399 (4)	C16—N9	1.374 (3)
C3—H3	0.9300	C16—H16	0.9300
C4—C7	1.358 (5)	C17—N5	1.361 (3)
C4—C13	1.404 (4)	C18—N10	1.319 (3)
C4—H4	0.9300	C18—N7	1.353 (3)
C5—C6	1.353 (4)	C19—N5	1.441 (3)
C5—H5	0.9300	C19—N7	1.458 (3)
C6—C15	1.401 (4)	C19—H19A	0.9700



C6—H6	0.9300	C19—H19B	0.9700
C7—C10	1.405 (5)	C20—N8	1.369 (3)
C7—H7	0.9300	C21—N6	1.383 (3)
C8—C22	1.477 (3)	C21—H21	0.9300
C8—H8A	0.9600	C22—N6	1.329 (3)
C8—H8B	0.9600	C22—N9	1.353 (3)
C8—H8C	0.9600	N1—N3	1.294 (3)
C9—C10	1.359 (4)	N2—N4	1.296 (3)
C9—C17	1.387 (4)	N3—N5	1.360 (3)
C9—H9	0.9300	N4—N8	1.367 (3)
N6—Zn1—N10	106.75 (8)	C17—C13—C4	120.2 (3)
N6—Zn1—C12	106.36 (6)	C11—C14—N10	109.3 (2)
N10—Zn1—C12	110.35 (6)	C11—C14—H14	125.4
N6—Zn1—C11	116.35 (6)	N10—C14—H14	125.4
N10—Zn1—C11	103.11 (6)	N2—C15—C20	109.1 (2)
C12—Zn1—C11	113.66 (3)	N2—C15—C6	130.3 (2)
C18—C1—H1A	109.5	C20—C15—C6	120.6 (2)
C18—C1—H1B	109.5	C21—C16—N9	106.3 (2)
H1A—C1—H1B	109.5	C21—C16—H16	126.9
C18—C1—H1C	109.5	N9—C16—H16	126.9
H1A—C1—H1C	109.5	N5—C17—C13	104.0 (2)
H1B—C1—H1C	109.5	N5—C17—C9	133.1 (2)
N8—C2—N9	114.16 (19)	C13—C17—C9	122.8 (2)
N8—C2—H2A	108.7	N10—C18—N7	110.1 (2)
N9—C2—H2A	108.7	N10—C18—C1	126.2 (2)
N8—C2—H2B	108.7	N7—C18—C1	123.7 (2)
N9—C2—H2B	108.7	N5—C19—N7	112.75 (19)
H2A—C2—H2B	107.6	N5—C19—H19A	109.0
C12—C3—C5	122.4 (3)	N7—C19—H19A	109.0
C12—C3—H3	118.8	N5—C19—H19B	109.0
C5—C3—H3	118.8	N7—C19—H19B	109.0
C7—C4—C13	117.1 (3)	H19A—C19—H19B	107.8
C7—C4—H4	121.5	N8—C20—C12	133.3 (2)
C13—C4—H4	121.5	N8—C20—C15	103.8 (2)
C6—C5—C3	121.8 (3)	C12—C20—C15	122.8 (2)
C6—C5—H5	119.1	C16—C21—N6	109.7 (2)
C3—C5—H5	119.1	C16—C21—H21	125.2
C5—C6—C15	117.0 (3)	N6—C21—H21	125.2
C5—C6—H6	121.5	N6—C22—N9	109.2 (2)
C15—C6—H6	121.5	N6—C22—C8	126.3 (2)
C4—C7—C10	121.6 (3)	N9—C22—C8	124.6 (2)
C4—C7—H7	119.2	N3—N1—C13	108.5 (2)
C10—C7—H7	119.2	N4—N2—C15	108.6 (2)
C22—C8—H8A	109.5	N1—N3—N5	108.8 (2)
C22—C8—H8B	109.5	N2—N4—N8	108.6 (2)
H8A—C8—H8B	109.5	C17—N5—N3	110.18 (19)
C22—C8—H8C	109.5	C17—N5—C19	129.7 (2)
H8A—C8—H8C	109.5	N3—N5—C19	119.62 (19)

H8B—C8—H8C	109.5	C22—N6—C21	106.54 (19)
C10—C9—C17	115.8 (3)	C22—N6—Zn1	130.58 (16)
C10—C9—H9	122.1	C21—N6—Zn1	122.47 (15)
C17—C9—H9	122.1	C18—N7—C11	107.9 (2)
C9—C10—C7	122.5 (3)	C18—N7—C19	126.8 (2)
C9—C10—H10	118.7	C11—N7—C19	125.3 (2)
C7—C10—H10	118.7	N4—N8—C20	109.87 (19)
C14—C11—N7	106.4 (2)	N4—N8—C2	118.9 (2)
C14—C11—H11	126.8	C20—N8—C2	129.8 (2)
N7—C11—H11	126.8	C22—N9—C16	108.33 (19)
C20—C12—C3	115.4 (3)	C22—N9—C2	126.1 (2)
C20—C12—H12	122.3	C16—N9—C2	125.4 (2)
C3—C12—H12	122.3	C18—N10—C14	106.4 (2)
N1—C13—C17	108.6 (2)	C18—N10—Zn1	129.92 (16)
N1—C13—C4	131.1 (3)	C14—N10—Zn1	123.69 (17)
C12—C3—C5—C6	0.6 (5)	C16—C21—N6—Zn1	-172.67 (17)
C3—C5—C6—C15	-1.1 (4)	N10—Zn1—N6—C22	-91.4 (2)
C13—C4—C7—C10	-1.0 (4)	C12—Zn1—N6—C22	150.73 (19)
C17—C9—C10—C7	-0.5 (4)	C11—Zn1—N6—C22	23.0 (2)
C4—C7—C10—C9	1.4 (5)	N10—Zn1—N6—C21	80.14 (19)
C5—C3—C12—C20	0.4 (4)	C12—Zn1—N6—C21	-37.69 (19)
C7—C4—C13—N1	-176.0 (3)	C11—Zn1—N6—C21	-165.44 (16)
C7—C4—C13—C17	-0.1 (4)	N10—C18—N7—C11	0.2 (3)
N7—C11—C14—N10	-0.3 (3)	C1—C18—N7—C11	179.7 (2)
C5—C6—C15—N2	-176.4 (3)	N10—C18—N7—C19	178.32 (19)
C5—C6—C15—C20	0.7 (4)	C1—C18—N7—C19	-2.1 (4)
N1—C13—C17—N5	0.3 (3)	C14—C11—N7—C18	0.1 (3)
C4—C13—C17—N5	-176.4 (2)	C14—C11—N7—C19	-178.1 (2)
N1—C13—C17—C9	177.8 (2)	N5—C19—N7—C18	77.5 (3)
C4—C13—C17—C9	1.0 (4)	N5—C19—N7—C11	-104.7 (3)
C10—C9—C17—N5	175.9 (3)	N2—N4—N8—C20	-1.5 (3)
C10—C9—C17—C13	-0.7 (4)	N2—N4—N8—C2	-169.2 (2)
C3—C12—C20—N8	176.7 (3)	C12—C20—N8—N4	-176.8 (3)
C3—C12—C20—C15	-0.8 (4)	C15—C20—N8—N4	1.0 (3)
N2—C15—C20—N8	-0.1 (3)	C12—C20—N8—C2	-10.9 (4)
C6—C15—C20—N8	-177.8 (2)	C15—C20—N8—C2	166.9 (2)
N2—C15—C20—C12	178.0 (2)	N9—C2—N8—N4	-96.1 (3)
C6—C15—C20—C12	0.3 (4)	N9—C2—N8—C20	99.1 (3)
N9—C16—C21—N6	-0.4 (3)	N6—C22—N9—C16	0.4 (3)
C17—C13—N1—N3	-0.5 (3)	C8—C22—N9—C16	-179.2 (2)
C4—C13—N1—N3	175.8 (3)	N6—C22—N9—C2	176.3 (2)
C20—C15—N2—N4	-0.8 (3)	C8—C22—N9—C2	-3.3 (4)
C6—C15—N2—N4	176.5 (3)	C21—C16—N9—C22	0.1 (3)
C13—N1—N3—N5	0.5 (3)	C21—C16—N9—C2	-175.9 (2)
C15—N2—N4—N8	1.4 (3)	N8—C2—N9—C22	82.1 (3)
C13—C17—N5—N3	0.0 (3)	N8—C2—N9—C16	-102.7 (3)
C9—C17—N5—N3	-177.1 (3)	N7—C18—N10—C14	-0.4 (3)
C13—C17—N5—C19	171.4 (2)	C1—C18—N10—C14	-179.9 (2)

---

C9—C17—N5—C19	-5.7 (4)	N7—C18—N10—Zn1	-179.89 (14)
N1—N3—N5—C17	-0.3 (3)	C1—C18—N10—Zn1	0.6 (3)
N1—N3—N5—C19	-172.7 (2)	C11—C14—N10—C18	0.4 (3)
N7—C19—N5—C17	79.1 (3)	C11—C14—N10—Zn1	179.98 (17)
N7—C19—N5—N3	-110.1 (2)	N6—Zn1—N10—C18	-69.1 (2)
N9—C22—N6—C21	-0.6 (3)	C12—Zn1—N10—C18	46.1 (2)
C8—C22—N6—C21	178.9 (2)	C11—Zn1—N10—C18	167.84 (18)
N9—C22—N6—Zn1	171.97 (15)	N6—Zn1—N10—C14	111.50 (19)
C8—C22—N6—Zn1	-8.5 (4)	C12—Zn1—N10—C14	-133.32 (18)
C16—C21—N6—C22	0.7 (3)	C11—Zn1—N10—C14	-11.60 (19)

---